

CMEF

China International
Medical Equipment Fair

11 - 14 **89th**

April 2024

Shanghai
China

12 - 15 **90th**

October 2024

Shenzhen
China



LinkedIn: [cmefandicmd](https://www.linkedin.com/company/cmefandicmd)

iCMEF - Online Platform

28,000+ Products on Display

8,300+ Exhibitors on iCMEF Store



Mobile

Scan to enter iCMEF – mini program
(Wechat Only)



PC

Scan to enter iCMEF – Website
www.CMEF.com.cn/en

Global Healthcare Industry Online Business Platform

- ✓ Booth navigation: search by booth number to locate booth
- ✓ Business Matchmaking: start matching in one click
- ✓ Conference: join online, watch conference
- ✓ Live Streaming: opening ceremony, exhibitor live, international pavilions, booth tour, visitor interview
- ✓ CMEF News: Obtain exhibition news immediately



iCMEF

Enhance your CMEF experience with iCMEF ~

China International Medical Equipment Fair		-----	1
International Rehabilitation and Personal Health Show		-----	5
International Elderly Care and Nursing Show		-----	5
International Home Care Exhibition		-----	5
International Component Manufacturing and Design Show		-----	9
Animal Health China	 国际宠物健康展览会 Animal Health China	-----	13
Emergency, Rescue & Safe China	 中国应急、安防及救援技术装备博览会 Emergency, Rescue & Safe China	-----	15



CMEF

创新科技 · 智领未来

NEW TECH · SMART FUTURE

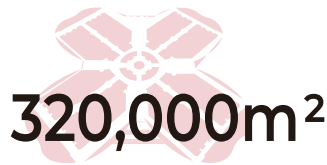


89th 2024.4.11-14
Shanghai, China

2024.10.12-15 **90th**
Shenzhen, China

CMEF was founded in 1979 and has undergone over 44 years of innovative development and is now regarded as a world leading medical and health technology platform. CMEF provides a comprehensive display of technological advancements and solutions from across the entire medical industry chain. CMEF is dedicated to industry trends, technological innovation, and fostering future business opportunities and development, contributing to the global advancement of the medical industry.

EXHIBITOR AREA SIZE



PROFESSIONAL VISITORS



EXHIBITORS



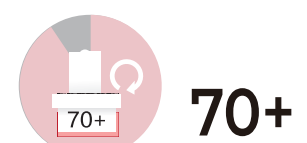
INNOVATIVE PRODUCTS



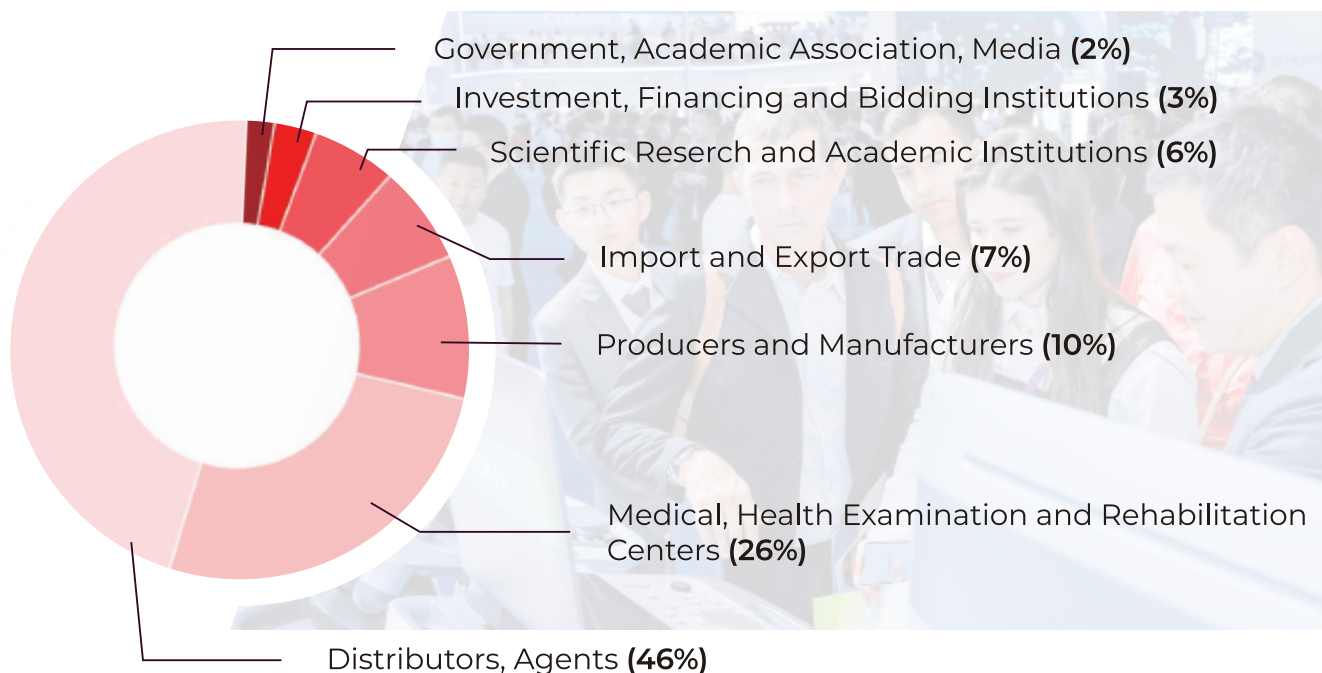
INTERNATIONAL PAVILIONS



HIGH-END FORUMS



VISITOR PROFILE



CATEGORIES

CMEF Imaging

- 5G Remote Solutions
- Precision Imaging
- Smart Imaging
- Smart Hospital System

CMEF IVD

- Molecular Disagnostics
- POCT, Immunoassay
- Cancer Screening
- Biochemical Testing
- Total Laboratory Space Solutions
- Biological Sample Storage and Transportation
- Home Testing

CMEF Operating Room

- All-in-one Operating Room
- Respiratory Anesthesia and Emergency Aid
- Surgical Instruments
- Infusion Equipment

Medical Robots

- Surgical Robots: Orthopedics, Endoscopy, Panvascular, Neurosurgery, Urology, Surgical Navigation
- Medical Service Robots: Collaborative Robots for Logistics, Drug Dispensing, Sterilization, Medical Guidance

Medical Optics

- 5G Operating Room Endoscopy Solutions
- New HD Endoscopes
- Capsule Endoscopy
- Laser Therapy Devices
- Simulation Medicine

Medical Electronic Equipment

- Intensive Care Medical Equipment
- Hemodialysis and Extracorporeal Circulation
- Maternal and Child Health
- Oncology
- Electronic Therapy Equipment

Orthopedics

- Joint and Spine
- Sports Medicine
- Trauma and Bone Repair

Hospital Construction & Logistics

- Smart Hospital
- Smart Pharmacy
- Intelligent Medical Logistics
- Smart Ward

Medical Services

- Business Registration
- Certification
- Regulatory Consulting
- Medical Equipment Services and Warranty

Disinfection & Infection Control

- Disinfection Supply Center
- Endoscopy Cleaning Center
- Baby Bathing Center
- Air Disinfection Equipment
- Third-party Disinfection Outsourcing

Medical Consumables

- High-Value Consumables
- Surgical Nursing and protective Consumables

Running Concurrently

CRS

CECN



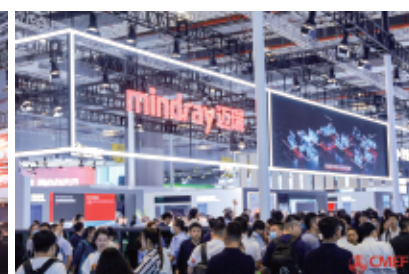
- Rehab Robots
- Sleep Health
- Assistive Devices
- Intelligent Aging
- TCM

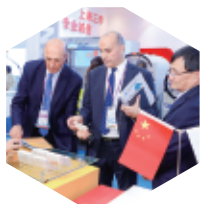


- Internet + Medical
- Artificial Intelligence
- Health Management
- Wearable Devices



MEDCONGRESS®





Exhibitors considered CMEF as the best platform for peer networking, and excellent opportunity to gain insights into the industry, and an unparalleled stage for brand promotion and business cooperation.



Visitors expressed that CMEF provided a critical opportunity to obtain the most up to date medical device industry information and engage with qualified exhibitors.



94% of visitors said they would recommend CMEF.



90% of visitors expressed interest in joining the next show.

OUR EXHIBITOR (PARTS)

Our leading exhibitors

我们的展商:





CRS



CECN

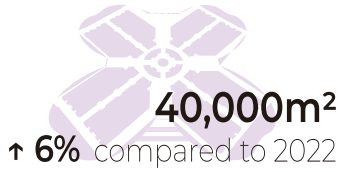


China International Rehabilitation and Personal Health Show
China International Elderly Care and Nursing Show
China International Home Care Exhibition

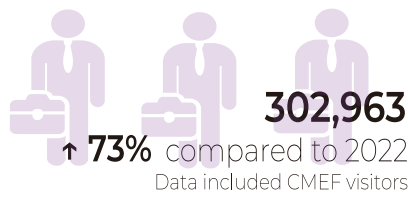


扫码申请展位

SHOW SCALE



PROFESSIONAL VISITORS



EXHIBITORS



97%

EXHIBITOR REBOOKING RATE

94%

VISITORS RECOMMENDATION RATE

Product Categories

- ☑ Brain-Computer Interface Technology & Products
- ☑ Rehabilitation Robots, Service Robots, Companion and Care Robots, Chinese Medicine Robots, Robots of Walking Aids
- ☑ Hospital Construction and Logistics Management
- ☑ Intelligent Elderly Care Products
- ☑ Integrated Elderly Care MedicalHealth and Rehabilitation
- ☑ Elderly's Home Improvement and Barrier-Free Facilities
- ☑ Elderly Care Services and Home Care Products
- ☑ Recreation and Health Products and Health Food
- ☑ Elderly Bathroom and Protective Products
- ☑ Institutions, Communities, Home Care and Commercial Institutions
- ☑ Sleep Aid Products
- ☑ Health Management Products and Services
- ☑ Intelligent Rehabilitation and Elderly Care Equipment
- ☑ Rehabilitation Engineering and Treatment Equipment
- ☑ Assistive Devices
- ☑ Prosthetics and Orthotics
- ☑ Sports Rehabilitation Equipment
- ☑ Chinese Medicine Equipment
- ☑ Household Medical Supplies

Exhibitor Clusters

Rehabilitation Robotics

Rehabilitation Engineering & Treatment

Smart Aging

Elderly Care and Nursing

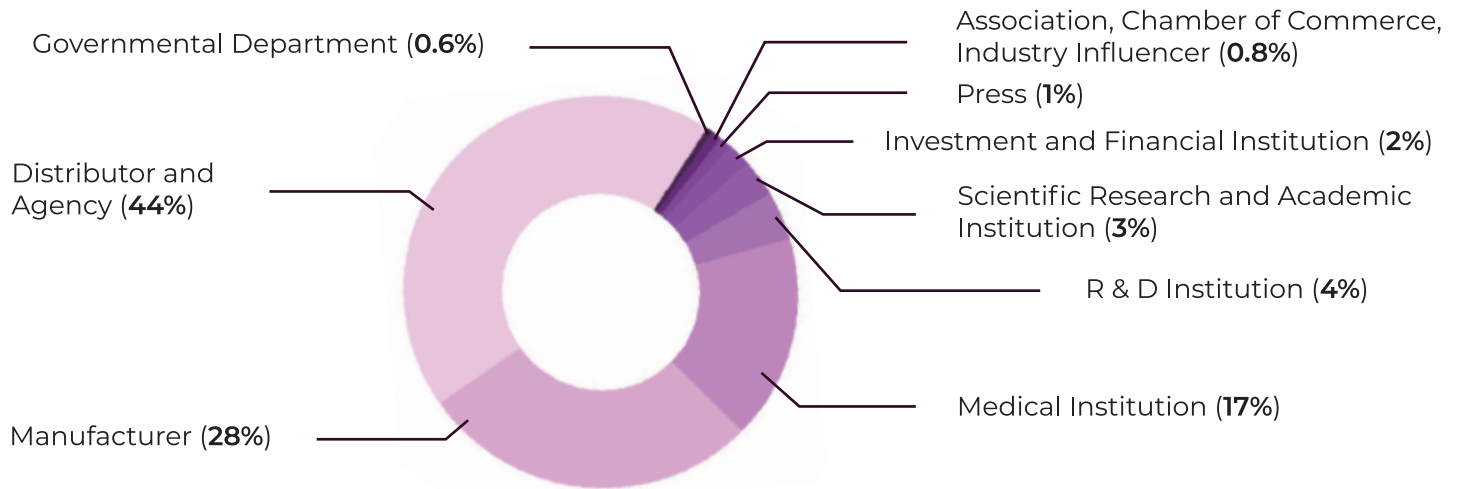
Home Health & Personal Care

Sleep Health

Geriatric Aids

Chinese Medicine and Health Care

Visitor Analytics



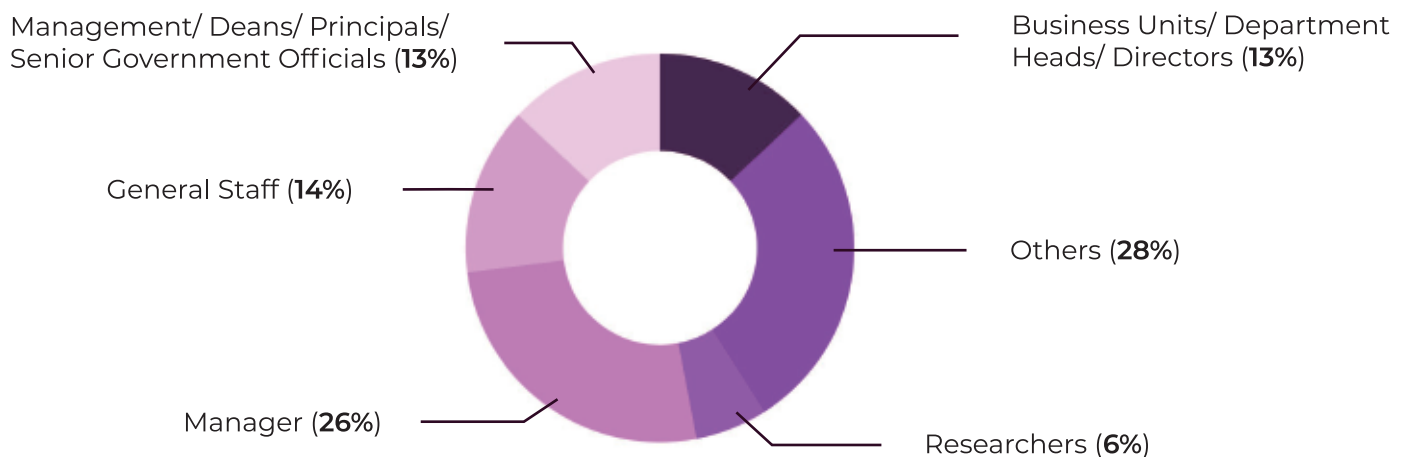
A SATISFIED CUSTOMER IS THE BEST BUSINESS STRATEG OF ALL

“For foreign brands that have just entered the Chinese market, attending a trade show is definitely the fastest and most direct way to expose our brand to the public, and as the most influential and well-known trade show in the healthcare industry, we have gained a lot of high-quality customers and partners at CMEF - CRS established contacts with a lot of governmental organizations and media and learned about the latest industry news in the expo. We can't wait to participate in the next CRS!

— Nancy Du,
Marketing, Stiegelmeier



Visitor By Position



Exhibitors (Partial)



Contact Us



International Sales & Marketing

Mr. Liang He
 Tel: +86 010 8455 6652
 Cel: +86 158 1119 0216
 Email: liang.he@reedsinopharm.com



Project Manager

Ms. Lingfei Kong
 Tel: +86 010 8455 6614
 Cel: +86 138 1170 5252
 Email: lingfei.kong@reedsinopharm.com



The International Component Manufacturing & Design Show



The Service Platform for the Full Process of
Medical Production Supply Chain



CMEF
China International
Medical Equipment Fair



中国医疗器械展



抗感染展



感染及个人防护展



国际装备展



亚洲医疗展



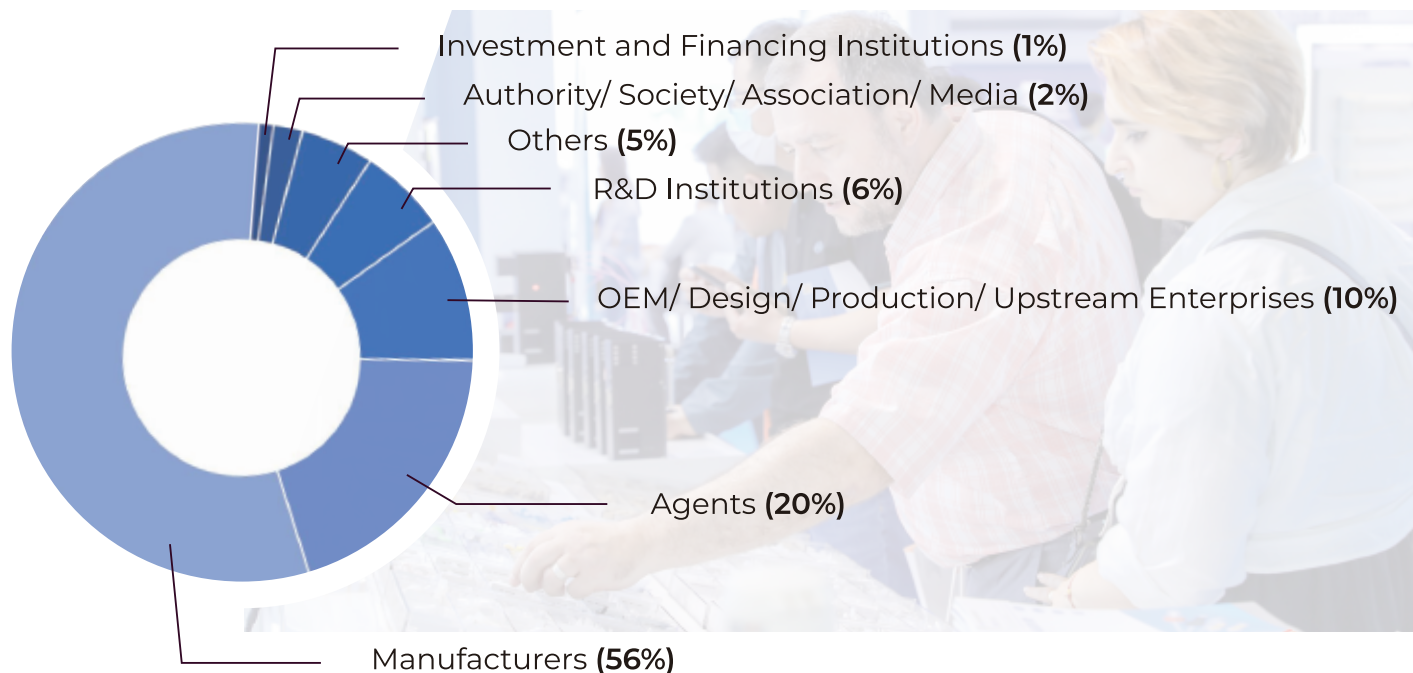
亚洲医药展

The International Component Manufacturing & Design Show (ICMD) is a premier event that caters to the medical component manufacturing industry's upstream sector. It brings together various crucial industrial clusters, including materials, intelligent manufacturing, chips, and sensors, showcasing cutting-edge high-tech polymer medical adhesives, films, and other innovative materials as well as intelligent manufacturing products and technologies, such as collaborative robots, embedded chips, and pressure sensors.



ICMD will be held in conjunction with CMEF, a highly comprehensive service platform that covers the entire medical device industry chain. It integrates the latest product technologies, innovative services, and academic exchanges, providing one-stop solutions for all industry-related needs. The platform is tailored to be a bridge between medical device manufacturers and upstream suppliers of components and services, with a goal to promote the latest advancements in medical device manufacturing as well as the collaboration and growth of the entire medical device industry chain.

VISITOR PROFILE



CATEGORIES

Intelligent Manufacturing and Chip

- Motherboard, Chip
- Robot
- Software
- Industrial Storage

Manufacturing Equipment and OEM Technology

- Extruder
- Injection Molding Machine
- Tip Forming Equipment
- Precision Manufacturing
- Mold Production
- Assembly Equipment
- 3D Printing

Software and Data Processing

- Intelligent Identification Software and Technology
- Modules
- Display Cascade Equipment

Electronic Components

- X-ray Components
- Switch
- High-Frequency Transmitter
- Instruments and Meters
- Battery
- Platen Heater
- Solenoid Valve

Optical Component

- Grating
- Filter
- Optical Fiber Component
- Photo Electric Appliance

Structural Fittings

- Manipulator, Bearing
- Plug-in Components
- Caster, Damper, Bumper
- Pipe Connector Fittings
- Fan

Packaging

- Packaging Equipment
- Packaging Materials

Medical Services

- Equipment Testing
- Registration Consulting
- Authentication Services
- Media
- Association

Cleaning and Disinfection

- Water Treatment Equipment
- Sterilizing Equipment

New Materials

- Polymer Materials
- Metal Materials
- Adhesives

Power System

- Fluid Control
- Motion Control
- Electric Motor

Industrial Robot

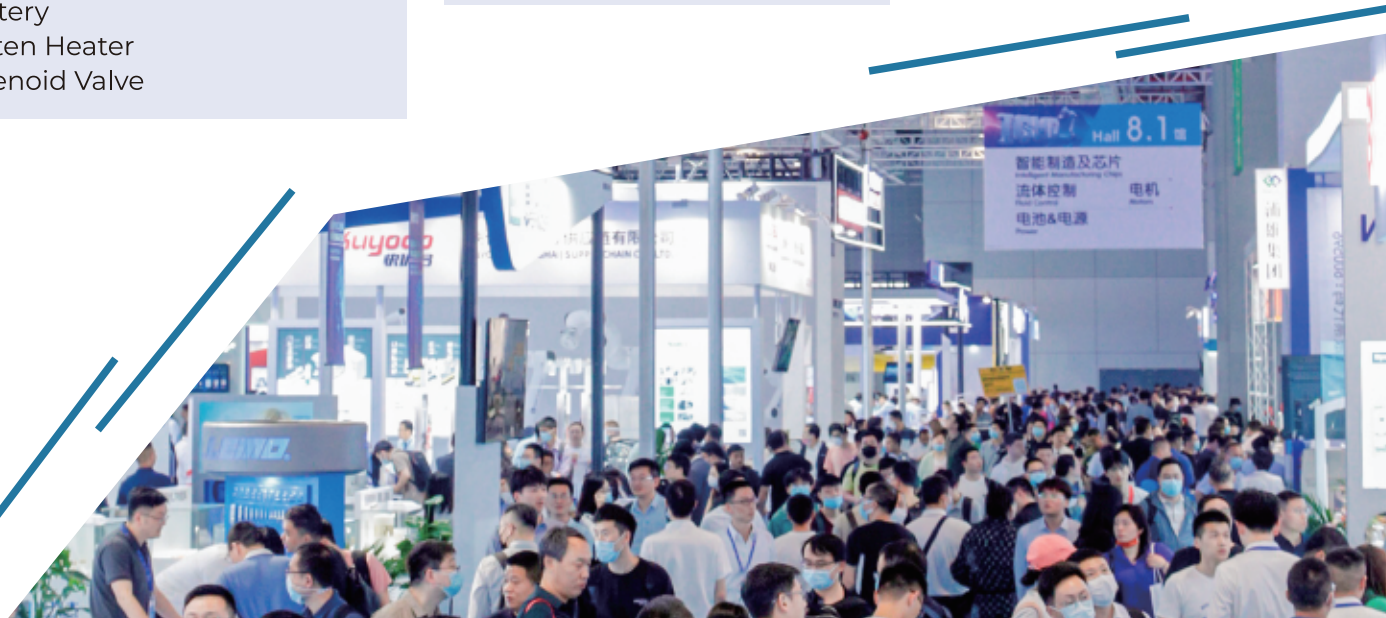
- Auxiliary Robot
- Key Parts of Robot

UDI Exhibition Area

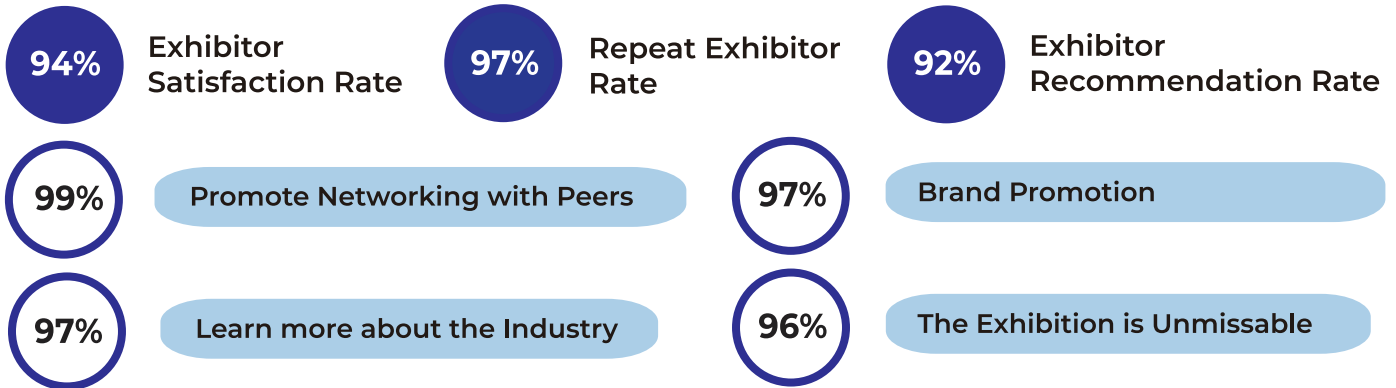
- Ink Jet Printer
- Label Printing

Medical Sensor

- Probe, Sensor
- Photomultiplier Tube
- Connecting Wire



COMMENTS FROM EXHIBITORS



The Service Platform for the Full Process of Medical Production Supply Chain

More than **95%** of exhibitors believe that ICMD is an excellent platform for exchanging industry information. Moreover, the coordination and interaction with CMEF makes ICMD an unmissable stage to achieve brand promotion to the accurate target audience and cooperation among the potential partners.

OUR EXHIBITOR (PARTS)





Animal Health China



 **国药励展**
Reed Sinopharm
Exhibitions

 **CMEF**
China Medical Equipment Fair

 **ICMD**
国际器械制造展

 **Intellipark Health**
国际智慧健康展

 **白十字**
急救展

 **CRS**
康保及个人健康展

 **CECN**
国际养老展

 **家庭医生展**

The Animal Health China (AHC) was initiated by CMEF in 2022. By working with experts in the pet medical care industry, AHC aims to promote the development of new medical equipment, construction of specialty systems, continuing education for pet physicians, and branding of pet clinics.

With the booming economy and rising incomes as well as changes in population structure and pet owner's perception, the pet industry in China is entering an unprecedented golden age. This market in China is ready to see an unparalleled explosive growth with the next 5 to 10 years, a great opportunity for the industry. Pet medical care in China will be a trillion-dollar market, and it is critical for pet medical enterprises seize the opportunity and realize diversified development.

CONFERENCE & FORUM

Pet Physician Training Courses

Pet Medical Summit Forum

Pet Hospital Management Conference

EXHIBITORS

Pet Medical Care

- Medical imaging equipment
- Blood testing equipment
- Operating room equipment
- Pet medicine
- Biological products/vaccines
- Endoscopy and minimally invasive equipment

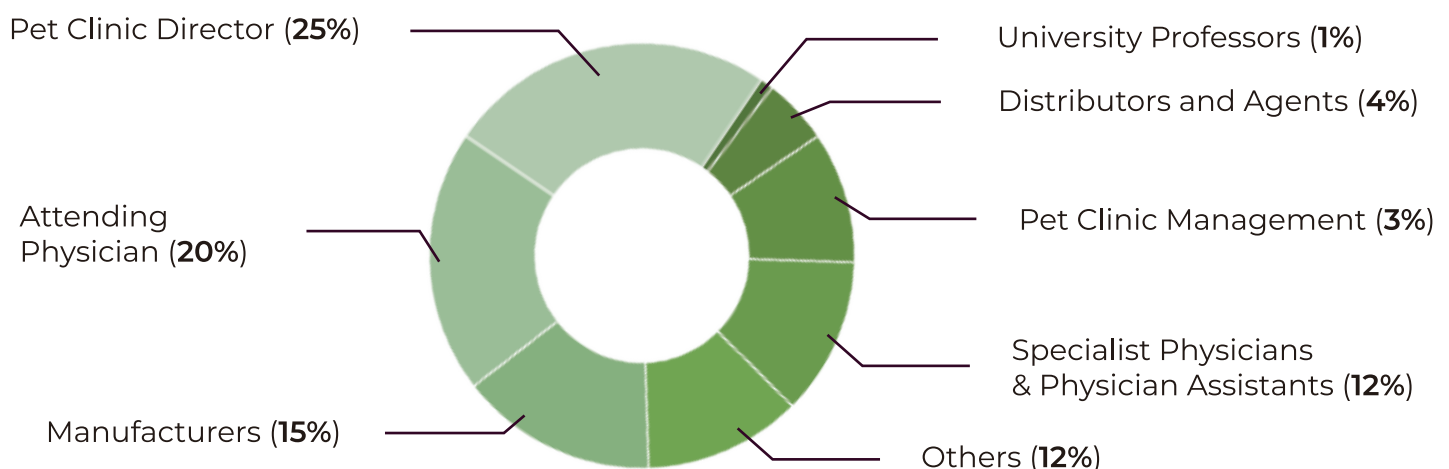
Pet Health Food

- Pet food
- Health products
- Prescription food
- Additives

Pet Clinic Management Services

- Management software
- water treatment equipment
- Internet-based pet consultation
- IT software management

VISITOR PROFILE





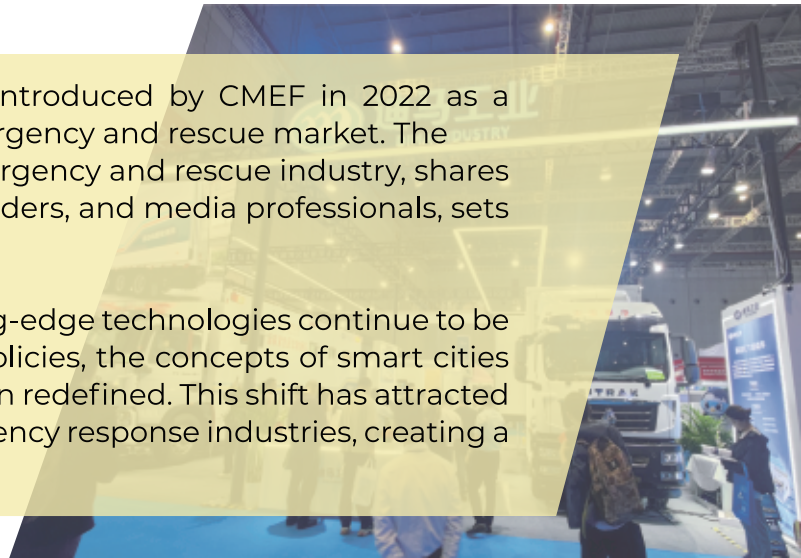
Emergency, Rescue & Safe China





The Emergency, Rescue & Safe China was introduced by CMEF in 2022 as a response to the call of the times and the emergency and rescue market. The platform showcases new products in the emergency and rescue industry, shares industry insights from experts, association leaders, and media professionals, sets trends with evaluations across ten categories.

As 5G+, Internet of Things, AI, and other cutting-edge technologies continue to be widely adopted and supported by national policies, the concepts of smart cities and intelligent emergency response have been redefined. This shift has attracted significant capital investment towards emergency response industries, creating a range of promising opportunities.



CONFERENCE & FORUM

Cardiopulmonary Resuscitation Summit

Rescue Medicine Summit

Medical Emergency Team Building Conference

EXHIBITORS

Home, Community and Building First Aid

- Household emergency supplies
- Emergency in public place
- Smart cities

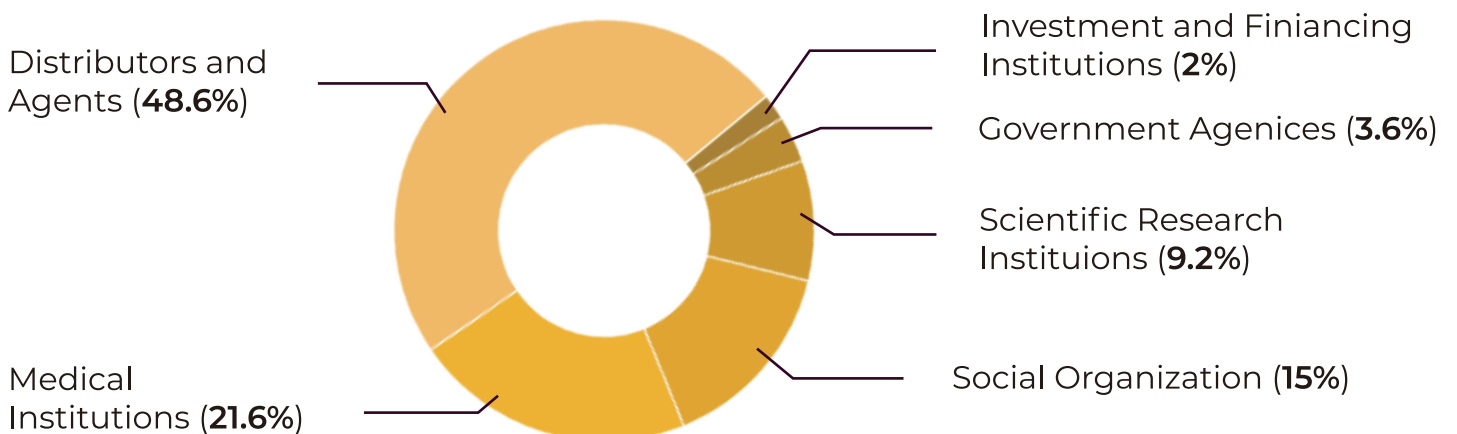
Outdoor Emergency Rescue

- Transportation
- Medical Treatment
- Communication Device

Fire Mitigation and Personal Protection

- Natural detection
- Disaster rescue
- Personal protection

VISITOR PROFILE



Contact Us

CMEF

Booth Booking

Ivy Wu

T: +86 10 8455 6554

E: haoting.wu@reedsinopharm.com

Marketing & Visit

Tina Wu

T: +86 10 8455 6578

E: yiwen.wu@reedsinopharm.com

ICMD

Booth Booking & Marketing

Yolanda Yang

T: +86 10 8455 6590

E: ziwei.yang@reedsinopharm.com

Booth Booking

Ivy Wu

T: +86 10 8455 6554

E: haoting.wu@reedsinopharm.com

Jane Wang

T: +86 10 8455 5586

E: tingyue.wang@reedsinopharm.com

CRS, CECN, Lifecare

Booth Booking & Marketing

Liang He

T: +86 10 8455 6652

E: liang.he@reedsinopharm.com

Animal Health China

Booth Booking

Fengyuan Yan

T: +86 10 8455 6582

E: fengyuna.yan@reedsinopharm.com

Emergency, Rescue, Safe China

Booth Booking

Rust Li

T: +86 10 8455 6619

E: rust.li@reedsinopharm.com

Website: www.cmef.com.cn/en

Linkedin: [cmefandicmd](#)